

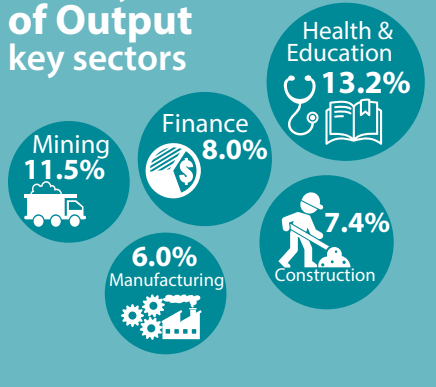
# Composition of the Australian Economy

10 October 2022

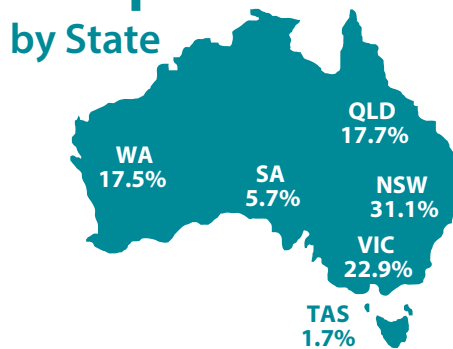
## SNAPSHOT



### Industry Share of Output key sectors



### Output Share by State



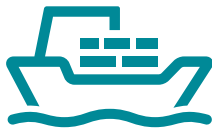
Population

**25.9 million**

**0.9%** annual growth

### Export Share by type

Resources: **70.7%**  
Services: **10.1%**  
Rural: **10.2%**  
Manufactured: **6.5%**



### Export Share by destination

CHINA: **36.0%**  
JAPAN: **12.2%**  
EU: **3.6%**  
KOREA: **7.1%**  
US: **4.6%**  
INDIA: **4.7%**



### Employment to population ratio

**64.3%**



Average Price of Residential Dwellings  
**\$922,000**



### Household wealth

as a share of income



**907%**

### Household debt

as a share of income

**188%**



Data in this snapshot are the latest available as at 10 October 2022.



RESERVE BANK OF AUSTRALIA

[www.rba.gov.au](http://www.rba.gov.au)

[@RBAInfo](https://twitter.com/RBAInfo)

[@ReserveBankAU](https://www.facebook.com/ReserveBankAU)

[@ReserveBankAU](https://www.instagram.com/ReserveBankAU)

[Reserve Bank of Australia](https://www.linkedin.com/company/ReserveBankofAustralia)